

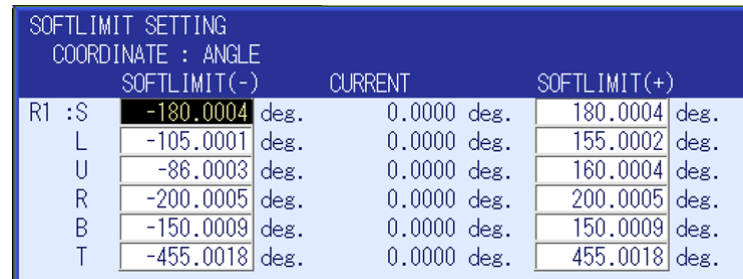
Changing Axis Limits in MotoSim for YRC1000 Welding Robots

Introduction

Certain models of Yaskawa robots are dual purpose: handling and welding. Since welding robots have a torch cable snaking through the axis', several welding robot models need their axis' range of motion reduced so as not to damage that cable. Examples would be MH12/MA1440 or GP12/AR1440.

When selecting an AR series welding robot in MotoSim (unlike the DX200 MA series) the motion range is NOT pre-configured. Instead, it matches the GP series range of motion. For example, an AR1730 motion range will be the same as a GP25. This can be an issue because it allows the MotoSim robot to reach locations that an actual robot will not.

For the AR1730, notice the default T-axis motion range is $\pm 455^\circ$...it should be $\pm 210^\circ$



SOFTLIMIT SETTING					
COORDINATE : ANGLE					
	SOFTLIMIT(-)		CURRENT		SOFTLIMIT(+)
RT :S	-180.0004	deg.	0.0000	deg.	180.0004
L	-105.0001	deg.	0.0000	deg.	155.0002
U	-86.0003	deg.	0.0000	deg.	160.0004
R	-200.0005	deg.	0.0000	deg.	200.0005
B	-150.0009	deg.	0.0000	deg.	150.0009
T	-455.0018	deg.	0.0000	deg.	455.0018

Figure 1: Incorrect AR1730 motion range is using a GP25's range by default.

This affects the following models:

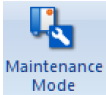
- AR1440
- AR1730
- AR2010
- AR3120

This document captures ideas, experiences, and informal recommendations from the Yaskawa Partner Support team. It is meant to augment – not supersede manuals or documentation from motoman.com. Please contact the Partner Support team at partnersupport@motoman.com for updates or clarification.

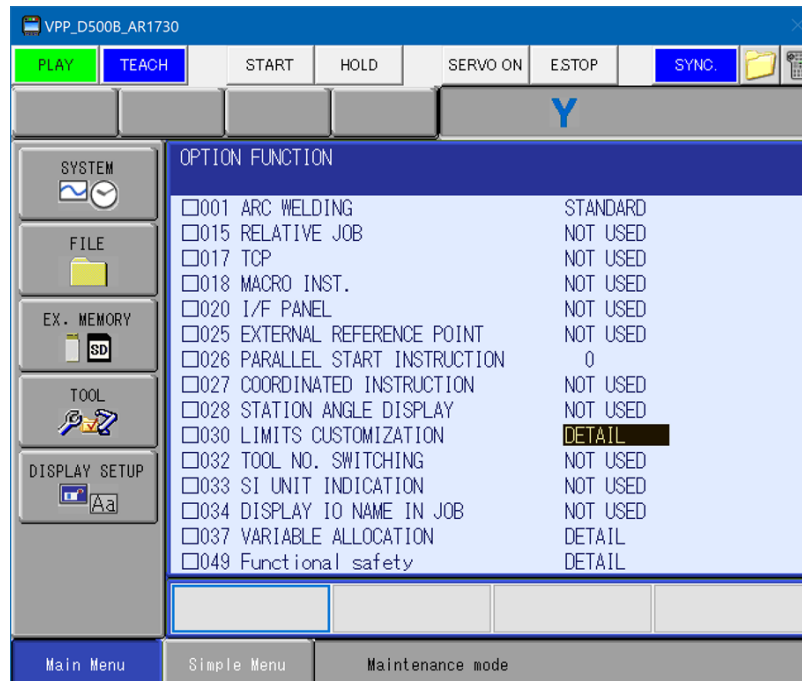
Process¹

The process to change the axis limits is straight-forward.

1. In MotoSim go into maintenance mode
 - a. Select the Controller Tab



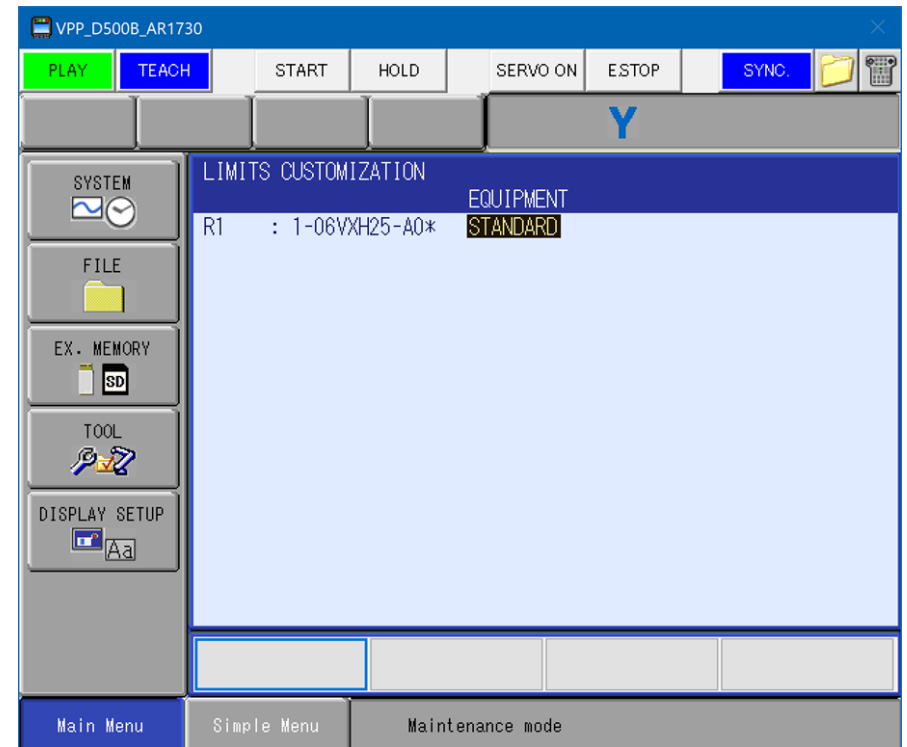
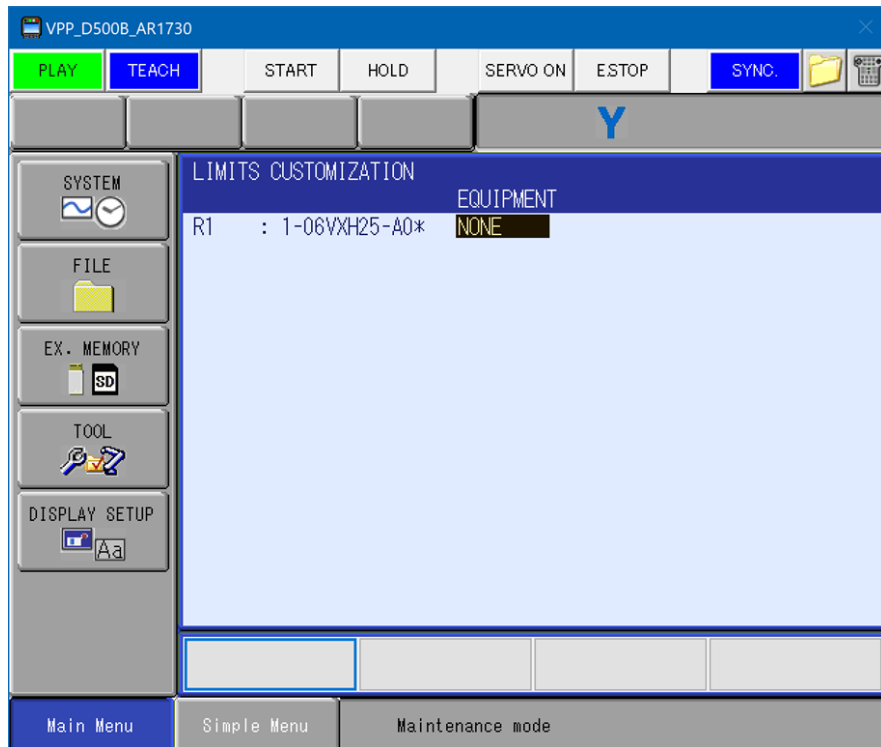
- b. Select **Maintenance Mode** to reboot the controller.
2. In the virtual Pendant screen select System/Setup/Option Function
 3. Scroll down and Select DETAIL for “Limits Customization”.



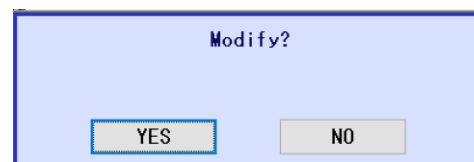
¹ This works for all except AR3120. See below for AR3120 process.

This document captures ideas, experiences, and informal recommendations from the Yaskawa Partner Support team. It is meant to augment – not supersede manuals or documentation from motoman.com. Please contact the Partner Support team at partnersupport@motoman.com for updates or clarification.

4. Select NONE



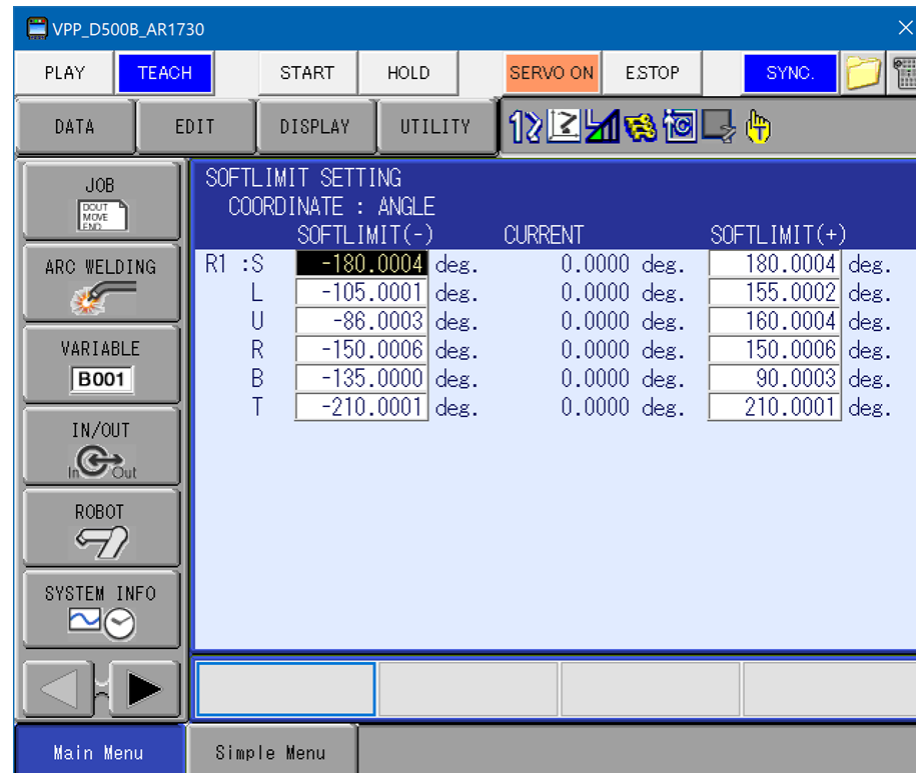
5. ...and change it to STANDARD.



6. Select YES to modify and reboot the controller.

This document captures ideas, experiences, and informal recommendations from the Yaskawa Partner Support team. It is meant to augment – not supersede manuals or documentation from motoman.com. Please contact the Partner Support team at partnersupport@motoman.com for updates or clarification.

7. The Soft-limit Settings (in the Robot menu) now have the correct motion ranges.



This document captures ideas, experiences, and informal recommendations from the Yaskawa Partner Support team. It is meant to augment – not supersede manuals or documentation from motoman.com. Please contact the Partner Support team at partnersupport@motoman.com for updates or clarification.

AR3120 Process

The above process does not work for the AR3120. There are currently no alternative motion ranges to select in maintenance mode.

It will need to be changed directly in the Robot Menu Soft Limits.

Use the numbers below as a reference:



SOFTLIMIT SETTING			
COORDINATE : ANGLE			
	SOFTLIMIT(-)	CURRENT	SOFTLIMIT(+)
R1 :S	-180.0000 deg.	-33.4752 deg.	180.0000 deg.
L	-90.0000 deg.	-58.1156 deg.	135.0000 deg.
U	-80.0000 deg.	-66.7907 deg.	206.0002 deg.
R	-200.0002 deg.	0.1740 deg.	200.0002 deg.
B	-150.0009 deg.	12.5254 deg.	150.0009 deg.
T	-210.0001 deg.	0.4025 deg.	210.0001 deg.